

# ProPEX® Engineered Polymer (EP) Coupling (up to 1½")



Submittal Information  
Revision H: Feb. 1, 2016

## Project Information

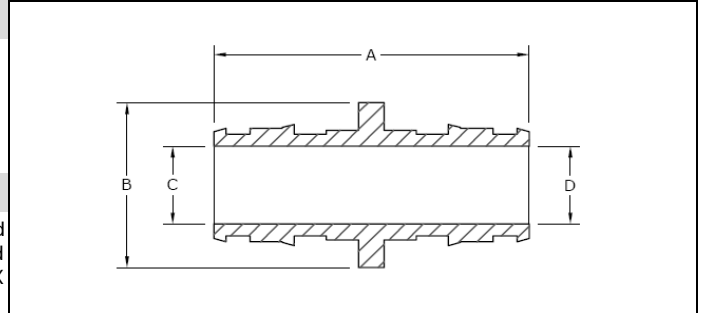
Job Name:	
Location:	Part No. Ordered:
Engineer:	Date Submitted:
Contractor:	Submitted By:
Manufacturer's Representative:	Approved By:

## Technical Data

Material: Polysulfone, 20% Glass-reinforced (¾" - 1")  
Modified Polyphenylsulfone (1¼" - 1½")

Max. Temp. (no pressure): 320°F (160°C)

Max. Working Temp./Pressure: 210°F (99°C) at 150 psi (1,034 kPa)



## Product Information and Application Use

The ProPEX® Engineered Polymer (EP) Coupling is available for use in hot and cold domestic potable water distribution, residential fire safety and radiant heating and cooling systems. Each end of the coupling is manufactured with an Uponor ProPEX fitting for connections to Uponor AquaPEX® or Wirsbo hePEX™ tubing.

✓	Description	Part Number	A	B	C	D	Weight	Equivalent Length (ft.)	Cv
	ProPEX EP Coupling, ⅜" PEX x ⅜" PEX	Q4773838	1.300"	0.70"	0.280"	0.280"	0.01 lbs.	N/A	N/A
	ProPEX EP Coupling, ½" PEX x ½" PEX*	Q4775050	1.600"	0.85"	0.405"	0.405"	0.01 lbs.	0.8	8.3
	ProPEX EP Coupling, ½" PEX x ¾" PEX*	Q4775075	1.800"	1.08"	0.405"	0.615"	0.03 lbs.	2.6	5.2
	ProPEX EP Coupling, ⅝" PEX x ⅝" PEX	Q4776363	1.860"	1.00"	0.538"	0.538"	0.01 lbs.	N/A	N/A
	ProPEX EP Coupling, ¾" PEX x ¾" PEX*	Q4777575	2.000"	1.18"	0.615"	0.615"	0.02 lbs.	0.9	19.0
	ProPEX EP Coupling, ¾" PEX x 1" PEX*	Q4777510	2.300"	1.34"	0.615"	0.818"	0.04 lbs.	2.7	12.5
	ProPEX EP Coupling, 1" PEX x 1" PEX*	Q4771010	2.500"	1.42"	0.818"	0.818"	0.04 lbs.	0.9	33.8
	ProPEX EP Coupling, 1¼" PEX x ¾" PEX*	Q4771307	2.625"	1.75"	0.989"	0.615"	0.05 lbs.	3.6	10.9
	ProPEX EP Coupling, 1¼" PEX x 1" PEX*	Q4771310	2.875"	1.75"	0.989"	0.818"	0.06 lbs.	2.6	22.3
	ProPEX EP Coupling, 1¼" PEX x 1¼" PEX*	Q4771313	3.000"	1.75"	0.989"	0.989"	0.07 lbs.	1.1	53.3
	ProPEX EP Coupling, 1½" PEX x ¾" PEX*	Q4771507	2.875"	2.13"	1.109"	0.615"	0.07 lbs.	3.5	10.8
	ProPEX EP Coupling, 1½" PEX x 1" PEX*	Q4771510	3.125"	2.13"	1.109"	0.818"	0.08 lbs.	4.3	19.0
	ProPEX EP Coupling, 1½" PEX x 1¼" PEX*	Q4771513	3.500"	2.13"	1.109"	0.989"	0.09 lbs.	3.7	33.9
	ProPEX EP Coupling, 1½" PEX x 1½" PEX*	Q4771515	3.625"	2.13"	1.109"	1.109"	0.10 lbs.	1.4	69.5

## Installation

Use ProPEX Rings to make the fitting. Refer to the Uponor Professional Plumbing Installation Guide, Radiant Floor Heating Installation Handbook or AquaSAFE™ Residential Fire Sprinkler Installation Guide for more information.

Standards	Codes	Listings
ASTM E84; ASTM E119; ASTM E814; ASTM F877; ASTM F1960; CAN/CSA B137.5; NSF 14; NSF 61	IBC; IMC; IPC; IRC; NPC of Canada; NSPC; UMC; UPC	cNSFus-pw; cNSFus-rfh; cQAIus P321; *HUD MR 1269; ICC-ES-PMG-1006; ICC-ES-PMG-1012; *UL 1821; *ULC/ORD-C199P; U.P. Code

## Related Applications

PEX-a Plumbing Systems  
Hydronic Radiant Heating and Cooling Systems  
Snow and Ice Melting Systems  
Permafrost Protection Systems  
Turf Conditioning Systems  
AquaSAFE Fire Safety Systems

## Contact Information

Uponor, Inc.  
5925 148th Street West  
Apple Valley, MN 55124 USA  
Phone: 800.321.4739  
Fax: 952.891.2008  
www.uponorpro.com

Uponor Ltd.  
2000 Argentia Rd., Plaza 1, Ste. 200  
Mississauga, ON L5N 1W1 CANADA  
Phone: 888.994.7726  
Fax: 800.638.9517  
www.uponorpro.com