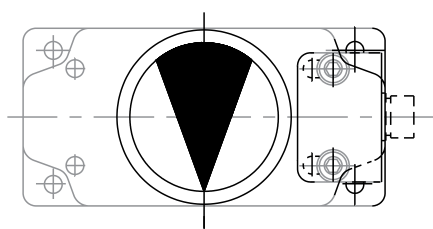


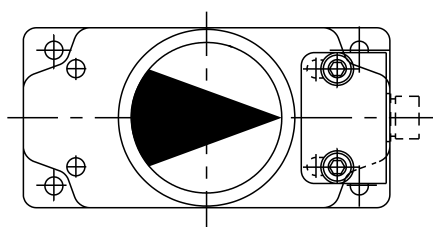


WARNING

Before mounting, make sure that electrical power to the cable assembly has been turned off. Failure to do so may result in personnel injury.



Actuator closed - Normal mode



Actuator closed - Transverse mode

Mounting the Position Indicator

1. Fit proper driveshaft adaptor (or coupling) (1) to actuator accessory drive, so that flats are parallel to the transverse axis of actuator in its closed position.
2. Assemble the K-BLOCK mounting kit (2) to the actuator or bracket kit (3) using screws (4) provided so that the indicator arrow points 90° clockwise from the sensor position with the actuator closed.
3. Assemble the K-BLOCK sensor (6) to the mounting kit assembly (2), using slot blanking plate (5) and screws (7).
4. Make sure the sensor (6) is 2 to 4 mm from the sensor puck.
5. Tighten the K-BLOCK sensor bolts (7) firmly. (max. torque - 1 Nm.).

CAUTION

- Do not overtorque the sensor bolts. Overtorquing the sensor bolts could damage the K-BLOCK assembly.
6. Attach the matching plug and cable to the K-BLOCK sensor.

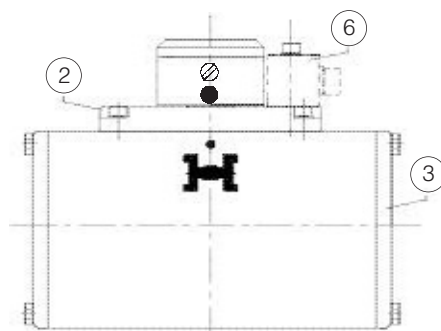
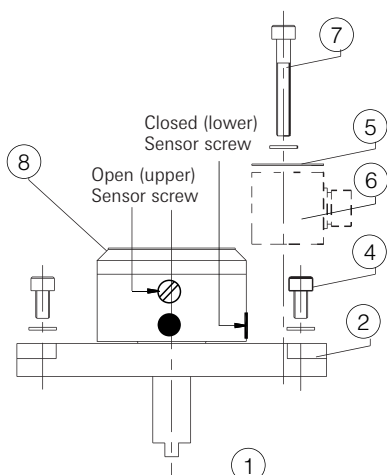
Notes

- Top sensor switch indicates open position.
- Bottom sensor switch indicates close position.
- Actuators rotate clockwise to close.
- Please refer to diagrams.

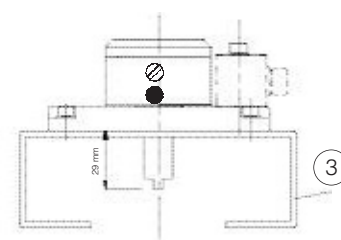
Transversely mounted units

Assembly as standard except

- a. Remove Indicator cap (8), rotate 90° anti-clockwise and re-fit with the indicator arrow pointing at the sensor.
- b. Changeover all yellow coloured plugs on puck with the black plugs.



Direct Mounted view



Bracket Mounted view