

# PVC and ABS Residential and Light Commercial Cleanouts

Pages 229-231

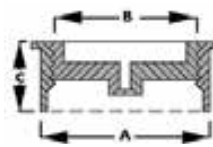
**SIZES: 1-1/2", 2", 2-1/2", 2"x 3",  
3", 3-1/2", 3"x 4", 4"**



For use in residential and light commercial applications.

## Internal Pipe Cleanout

Solvent Welds Into Schedule 40 DWV Pipe



MADE IN THE  
**USA**

- Allows pipe to be cut flush with floor or wall
- Countersunk plug included

	A	B	C
Inside 2"		1-1/2"	1"
Inside 3"		2-1/2"	1-1/8"
Inside 4"		3-1/2"	1-1/4"

### PVC

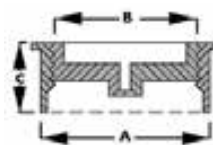
PART NO.	PIPE SIZE	PLUG SIZE	OD	CTN/MSTR
C60106	2"	1-1/2" IPS	1-7/8"	1/100
C60007	3"	2-1/2" IPS	2-13/16"	1/10
C60008	4"	3-1/2" IPS	4"	1/50
C60116	2"	1-1/2" with insert	—	1/10
C60117	3"	2-1/2" with insert	—	1/10
C60118	4"	3-1/2" with insert	—	1/10

### ABS

PART NO.	PIPE SIZE	PLUG SIZE	OD	CTN/MSTR
C60107	2"	1-1/2" IPS	1-7/8"	1/100
C60011	3"	2-1/2" IPS	2-13/16"	1/10
C60012	4"	3-1/2" IPS	4"	1/10

## Heavy Duty Internal Pipe Cleanout

Solvent Welds Into Schedule 40 DWV Pipe



MADE IN THE  
**USA**

- Allows pipe to be cut flush with floor or wall
- Countersunk plug included

	A	B	C
Inside 3"		2-1/4"	1-7/8"
Inside 4"		3-1/2"	2"

### PVC

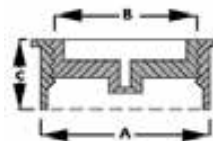
PART NO.	SIZE	PLUG SIZE	CTN/MSTR
C60207	3"	2" IPS	1/10
C60108	4"	3" IPS	1/10

### ABS

PART NO.	SIZE	PLUG SIZE	CTN/MSTR
C60211	3"	2" IPS	1/10
C60112	4"	3" IPS	1/10

## Hub/Fitting Cleanout

Fits Inside 4" Schedule 40 DWV Fittings



MADE IN THE  
**USA**

- 3-1/2" IPS countersunk plug
- Solvent welds into 4" fitting hubs

	A	B	C
	4-1/2"	3-7/8"	2-3/16"

### PVC

PART NO.	DESCRIPTION	CTN/MSTR
C60009	4" hub/fitting cleanout	1/10

### ABS

PART NO.	DESCRIPTION	CTN/MSTR
C60010	4" hub/fitting cleanout	1/10