

# 907 Series

COPPERLOC Non-Removable Copper Push End  
90° Elbow CxC (1/2" through 1")

## SUBMITTAL SHEET

EPC

COPPERLOC



Job Name:	
Job Location:	
Engineer:	
Contractor:	
Tag:	
PO#:	
Rep:	
Wholesale Dist.:	

### DESCRIPTION

The CopperLoc® 907 Non-Removable Push 90° Elbow features a lead-free dezincification resistant copper body, a stainless steel grab ring, a nylon separation ring and an EPDM O-Ring. CopperLoc® products are manufactured utilizing proven ASTM materials and standards. Proudly Made in the USA.

### FEATURES

- Sizes: 1/2", 3/4", 1"
- Lead free construction
- No special tools required

### PERFORMANCE RATING

- Maximum Pressure: 200 psi (13.7 bar)
- Temperature Range: 32°F - 250°F, (0°C - 121°C)

### APPROVALS

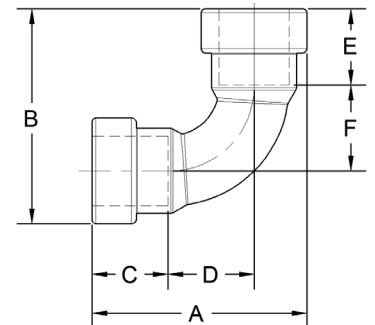
- cUPC® Compliant
- ARRA Compliant
- NSF/ANSI 372 Lead Free
- NSF/ANSI 61 Water Quality
- ASSE 1061
- IAPMO File Listings: 4951
- Guide MHKZ: No. 6 oil at 250°F

### STANDARD MATERIALS LIST

Body	UNS C12200 Copper
Grab Ring	Stainless Steel
Support Ring	Nylon
O-Ring	EPDM
Lubrication	Silicone, ANSI/NSF-61 Listed

### DIMENSIONS

ITEM NO.	SIZE (IN.)	DIMENSIONS (IN.)									WT. (LBS.)
		A	B	C	D	E	F	HEIGHT	WIDTH	DEPTH	
10170790	907 1/2 CXC	1.80	1.80	0.66	0.76	0.66	0.76	1.80	1.80	0.91	0.09
10170795	907 3/4 CXC	2.28	2.28	0.72	1.16	0.72	1.16	2.28	2.28	1.18	0.14
10170800	907 1 CXC	2.75	2.75	0.78	1.25	0.78	1.25	2.75	2.75	1.49	0.27



\* LEAD FREE: The wetted surfaces of this product shall contain no more than 0.25% lead by weighted average. Complies with Federal Public Law 111-380. ANSI 3rd party approved and listed.

Customer Service (704) 841-6000  
www.apolloflowcontrols.com

This specification is provided for reference only. Conbraco Industries Inc. reserves the right to change any portion of this specification without notice and without incurring obligation to make such changes to Conbraco products previously or subsequently sold. Please visit [apolloflowcontrols.com](http://apolloflowcontrols.com) for the most current information.

