

901-R Series

COPPERLOC Non-Removable Copper Push End Reducer Coupling CxC (3/4"x1/2" through 1"x3/4")

SUBMITTAL SHEET



Job Name:	
Job Location:	
Engineer:	
Contractor:	
Tag:	
PO#:	
Rep:	
Wholesale Dist.:	

DESCRIPTION

The CopperLoc® 901-R Non-Removable Push Reducer Coupling features a lead-free dezincification resistant copper body, a stainless steel grab ring, a nylon separation ring and an EPDM O-Ring. CopperLoc® products are manufactured utilizing proven ASTM materials and standards. Proudly made in the USA.

FEATURES

- Sizes: 3/4"x1/2", 1"x1/2", 1"x3/4"
- Lead free construction
- No special tools required

PERFORMANCE RATING

- Maximum Pressure: 200 psi (13.7 bar)
- Temperature Range: 32°F - 250°F, (0°C - 121°C)

APPROVALS

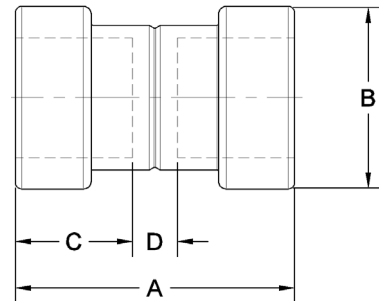
- cUPC® Compliant
- ARRA Compliant
- NSF/ANSI 372 Lead Free
- NSF/ANSI 61 Water Quality
- ASSE 1061
- IAPMO File Listings: 4951
- Guide MHKZ: No. 6 oil at 250°F

STANDARD MATERIALS LIST

Body	UNS C12200 Copper
Grab Ring	Stainless Steel
Support Ring	Nylon
O-Ring	EPDM
Lubrication	Silicone, ANSI/NSF-61 Listed

DIMENSIONS

ITEM NO.	SIZE (IN.)	DIMENSIONS (IN.)							WT. (LBS.)
		A	B	C	D	HEIGHT	WIDTH	DEPTH	
10170700	900 1/2 CXC	1.53	0.90	0.66	0.15	0.90	1.53	0.90	0.06
10170705	900 3/4 CXC	1.63	1.18	0.72	0.13	1.18	1.63	1.18	0.10
10170710	900 1 CXC	1.57	1.47	0.78	0.11	1.48	1.57	1.48	0.14



* LEAD FREE: The wetted surfaces of this product shall contain no more than 0.25% lead by weighted average. Complies with Federal Public Law 111-380. ANSI 3rd party approved and listed.