

# LC149 Series

Contractor Grade Butterfly Valve

LEAD FREE

## SUBMITTAL SHEET

"Apollo" Flow Controls



Job Name:	
Job Location:	
Engineer:	
Contractor:	
Tag:	
PO#:	
Rep:	
Wholesale Dist.:	

### DESCRIPTION

The Apollo International® LC149 Series Cast Iron Butterfly Valves are ideal for use in Industrial and Commercial/HVAC/Mechanical applications. The LC149 Series is a lug style valve designed to be economical yet have high pressure capabilities. Available in sizes 2" - 12".

### FEATURES

- Compatible with ANSI 125# & 150# Flanges
- ISO 5211 Top Plate Allows Choice of Apollo® Pneumatic Actuators and Manual Operators
- "Double-D" Stem Design
- Conforms to MSS SP-67 & API 609
- Extended Neck for up to 2" of Insulation
- Suitable for Bidirectional Service

### PERFORMANCE RATING

- Max Operating Pressure: 200 psi
- Temperature Range: -30°F to +225°F

### APPROVALS

- NSF/ANSI 372 Lead Free
- NSF/ANSI 61 Water Quality
- CRN 0C12102.8CL

### STANDARD MATERIAL LIST

Body	Cast Iron, ASTM A126 Class B
Disc	Aluminum Bronze, ASTM B148-C95400
Shaft	Stainless Steel, ASTM A276, Type 416
Seat	EPDM with phenolic backing
Bushings	Glass Reinforced Epoxy Resin
Stem Seal	EPDM

### SPECIFICATIONS

VALVE SIZE		TORQUE RATING *(IN-LB)				FLOW	WEIGHT (LB)		GEAR RATIO
		FULL RATED PRESSURES (PSI)					C <sub>v</sub> FULL OPEN	W/ LEVER	
IN.	MM	ΔP 50	ΔP 100	ΔP 150	ΔP 200				
2	50	100	106	111	117	115	8	--	30:1
2.5	65	150	163	176	189	196	10	--	30:1
3	80	207	220	232	244	302	11	--	30:1
4	100	290	323	357	390	600	17	--	30:1
5	125	423	481	540	598	1022	20	--	30:1
6	150	599	691	783	875	1579	23	--	30:1
8	200	1060	1183	1307	1430	3136	44	71	50:1
10	250	1671	1872	2074	2275	5340	67	94	50:1
12	300	2568	2795	3023	3250	8250	102	129	50:1

\*LUBRICATING MEDIA SURFACE

### MODEL NUMBER MATRIX

LC149	06	1
SERIES NUMBER	SIZE (IN)	OPERATOR
LC149	02 = 2"	1 = 10 Position Handle (2" - 12")
Cast Iron Lug Body	25 = 2.5"	2 = Gear Operator (8" - 12" only)
Aluminum Bronze Disc	03 = 3"	
416 SS Shaft	04 = 4"	
Black EPDM Seat	05 = 5"	
	06 = 6"	
	08 = 8"	
	10 = 10"	
	12 = 12"	

\*LEAD FREE: The wetted surfaces of this product shall contain no more than 0.25% lead by weighted average. Complies with Federal Public Law III-380. ANSI 3rd party approved and listed.

Customer Service (704) 841-6000  
www.apolloflowcontrols.com

This specification is provided for reference only. Conbraco Industries Inc. reserves the right to change any portion of this specification without notice and without incurring obligation to make such changes to Conbraco products previously or subsequently sold. Please visit [apolloflowcontrols.com](http://apolloflowcontrols.com) for the most current information.



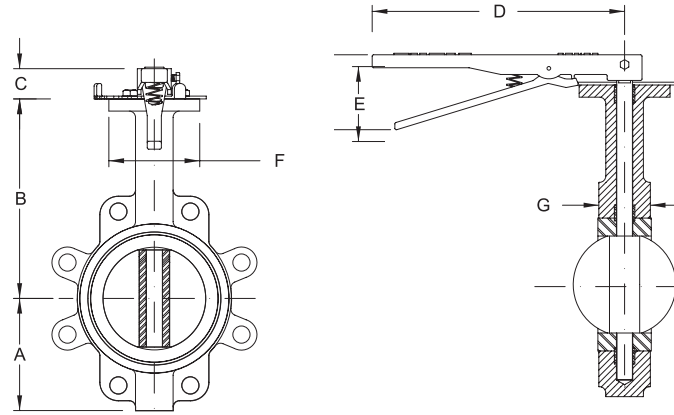
# LC149 Series

Contractor Grade Butterfly Valve

LEAD FREE

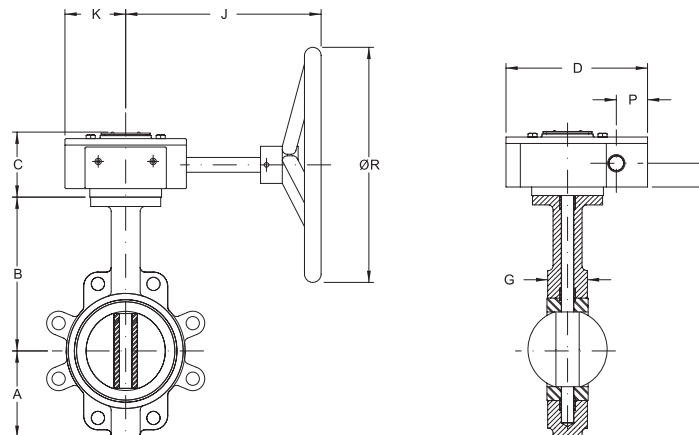
## SUBMITTAL SHEET

"Apollo" Flow Controls



### DIMENSIONS - 149 SERIES WITH HANDLE

SIZE (IN)	DIMENSIONS (IN.)						
	A	B	C	D	E	F	G
2	3.25	6.38	1.25	10.5	3.1	2.70	1.75
2.5	3.75	6.88	1.25	10.5	3.1	2.70	1.88
3	4.00	7.13	1.25	10.5	3.1	2.70	1.88
4	4.88	7.88	1.25	10.5	3.1	2.70	2.13
5	5.38	8.38	1.25	10.5	3.1	2.70	2.25
6	5.88	8.88	1.25	10.5	3.1	2.70	2.25
8	7.13	10.25	1.75	14.3	3.5	4.61	2.50
10	8.25	11.50	1.88	14.3	3.5	4.61	2.75
12	9.75	13.25	1.88	14.3	3.5	4.61	3.13



### DIMENSIONS - 149 SERIES WITH GEAR OPERATOR

SIZE (IN)	DIMENSIONS (IN.)									
	A	B	C	D	G	H	J	K	P	ØR
8	7.13	10.25	3.38	8.00	2.50	1.62	9.48	3.25	1.50	11.88
10	8.25	11.50	3.38	8.00	2.75	1.62	9.48	3.25	1.50	11.88
12	9.75	13.25	3.38	8.00	3.13	1.62	9.48	3.25	1.50	11.88

Customer Service (704) 841-6000  
www.apolloflowcontrols.com

This specification is provided for reference only. Conbraco Industries Inc. reserves the right to change any portion of this specification without notice and without incurring obligation to make such changes to Conbraco products previously or subsequently sold. Please visit [apolloflowcontrols.com](http://apolloflowcontrols.com) for the most current information.

