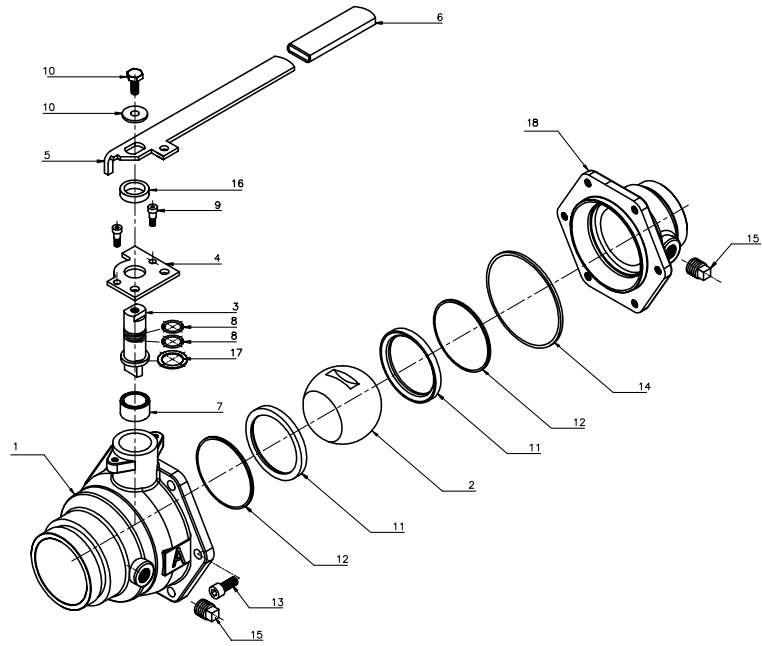


# MODEL 3700V

## Cast Iron Grooved-End Ball Valve

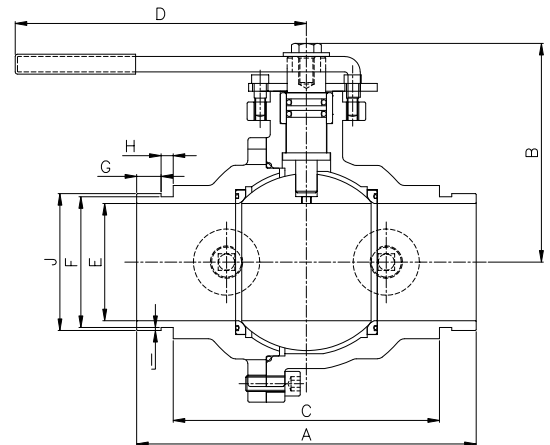


	<b>Part</b>	<b>Material</b>
1	<b>Body</b>	Cast Iron/A48 Class 30
2	<b>Ball</b>	Cast Iron/PFA* Fused
3	<b>Stem</b>	Stainless Steel
4	<b>Stop Plate</b>	Steel
5	<b>Handle</b>	Steel
6	<b>Handle Grip</b>	Vinyl Dipped Plastisol
7	<b>Sleeve</b>	Stainless Steel
8	<b>Stem O-Ring</b>	Nitrile Rubber (Buna-N)
9	<b>Shoulder Screw</b>	Steel
10	<b>Stem Bolt/Washer</b>	Steel
11	<b>Seat</b>	Virgin PTFE
12	<b>Back Seat O-Ring</b>	Nitrile Rubber (Buna-N)
13	<b>Socket Head Screw</b>	Steel
14	<b>Body Gasket</b>	Nitrile Rubber (Buna-N)
15	<b>Body Plug</b>	*
16	<b>Collar</b>	Steel
17	<b>Thrust Washer</b>	PTFE
18	<b>Body Cap</b>	Cast Iron/A48 Class 30



\*2" - 4" Steel; 6" Cast Iron

<b>DIMENSIONS:</b>	<b>2</b>	<b>2 1/2</b>	<b>3</b>	<b>4</b>	<b>6</b>
<b>A End to End</b>	7.80"	8.64"	8.68"	9.90"	12.56"
<b>B Center of Port to Top</b>	4.37"	5.31"	5.59"	6.34"	8.31"
<b>C Face to Face</b>	5.80"	6.77"	6.81"	7.90"	10.56"
<b>D Center of Valve to Handle End</b>	9.29"	9.76"	9.76"	10.67"	16.79"
<b>E Port Diameter</b>	2"	2.50"	3"	4"	6"
<b>F Groove Diameter</b>	2.24"	2.72"	3.34"	4.33"	6.45"
<b>G Gasket Seat</b>	0.63"	0.63"	0.63"	0.63"	0.63"
<b>H Groove Width</b>	0.31"	0.31"	0.31"	0.37"	0.38"
<b>I Groove Depth</b>	0.06"	0.08"	0.08"	0.08"	0.09"
<b>J Grooved End OD</b>	2.37"	2.87"	3.50"	4.5"	6.63"
<b>Weight (lbs.)</b>	12	19	26	45	105



- Certified to meet the requirements of NSF/ANSI 61 and NSF/ANSI 372
- PFA\*- Fused Solid Ball
- Double tapped & plugged bosses allow for venting or draining downstream, or test port for backflow preventer
- Full Port in All Sizes
- Rated 200W @ 200°F
- Class VI Positive Shutoff
- 100% Lead-Free
- Low Torque
- Ideal for Liquid, Air, and Backflow applications
- Blowout Proof Stem
- Meets all State and Federal Lead-Free Laws

\*PFA is an ingredient commonly branded as Teflon®.