

American Standard



BARRIER FREE

GLENWALL™ PRESSURE-ASSISTED WALL-MOUNTED TOILET

VITREOUS CHINA

GLENWALL™ PRESSURE-ASSISTED TOILET

❑ 2093.100

- Vitreous china
- Low-consumption (6.0 Lpf/1.6 gpf)
- Wall-mounted, back-outlet toilet
- Elongated bowl
- Fully-glazed 2" ballpass trapway
- 10" x 12" water surface area
- Pressure-assisted siphon jet action
- Side-mounted chrome trip lever
- Close-coupled flushometer tank*
- Speed Connect™ tank/bowl coupling system
- Sanitary bar on bowl

❑ 3402.016 Elongated bowl

❑ 4098.100 Tank complete with coupling components



Nominal Dimensions:

749 x 762 x 495 mm
(29-1/2" x 30" x 19-1/2")

Fixture only, seat and cover supplied by others

Required working pressure range
25 psi - 80 psi

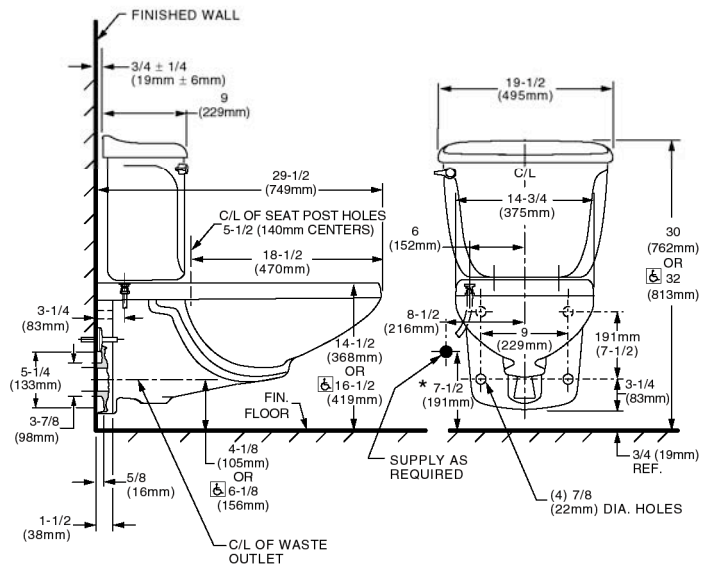
Alternate Configurations Available:

- ❑ 4098.700 Tank and tank cover only w/tank cover locking device
- ❑ 4098.800 Tank and tank cover only w/right hand trip lever

Compliance Certifications -

Meets or Exceeds the Following Specifications:

- ASME A112.19.2 for Vitreous China Fixtures



NOTES:

WASTE OUTLET SEAL RING MUST BE NEOPRENE OR GRAPHITE-FELT (WAX RING NOT RECOMMENDED)
SUGGEST 1/16" CLEARANCE BETWEEN FACE AT WALL AND BACK OF BOWL.
CARRIER FITTING AS REQUIRED TO BE FIGURED AND FURNISHED BY OTHERS.
PROVIDE SUITABLE REINFORCEMENT FOR ALL SUPPORTS.
SUPPLY NOT INCLUDED WITH FIXTURE AND MUST BE ORDERED SEPARATELY.
* DIMENSION SHOWN FOR LOCATION OF SUPPLY IS SUGGESTED.
FOR ADDITIONAL INFORMATION REFER TO INSTALLATION INSTRUCTIONS SUPPLIED.

IMPORTANT: Dimensions of fixtures are nominal and may vary within the range of tolerances established by ANSI Standard A112.19.2. These measurements are subject to change or cancellation. No responsibility is assumed for use of superseded or voided pages.

To Be Specified:

- ❑ Color:
- ❑ Seat: American Standard #5324.019 "Rise and Shine" (with easy to clean lift-off hinge system) solid plastic closed front seat with cover. See page TB-001.
- ❑ Seat: American Standard #5311.012 "Laurel" molded closed front seat with cover. See page TB-001.
- ❑ Alternate Seat:
- ❑ Supply with Stop:

* Flushmate III tank system by Flushmate® Div. of Sloan Valve Co



When installed so top of seat is 432 to 483mm (17" to 19") from the finished floor.
MEETS THE AMERICANS WITH DISABILITIES ACT GUIDELINES AND ANSI A117.1 REQUIREMENTS FOR ACCESSIBLE AND USEABLE BUILDING FACILITIES-CHECK LOCAL CODES.